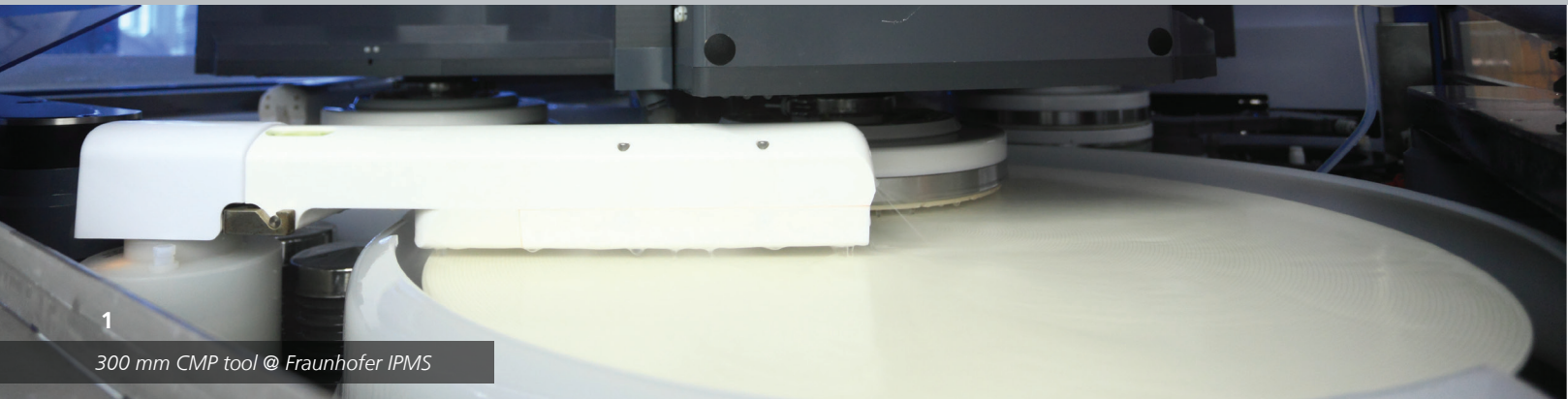




Fraunhofer

IPMS

FRAUNHOFER INSTITUTE FOR PHOTONIC MICROSYSTEMS IPMS



1
300 mm CMP tool @ Fraunhofer IPMS

INTERCONNECTS

HIGH-K DEVICES

NON-VOLATILE MEMORIES



Fraunhofer Institute for
Photonic Microsystems IPMS
Center Nanoelectronic
Technologies (CNT)

Königsbrücker Str. 178
01099 Dresden
Germany

Dr. Benjamin Uhlig
+49 351 2607 3064
screening@ipms.fraunhofer.de

www.ipms.fraunhofer.de

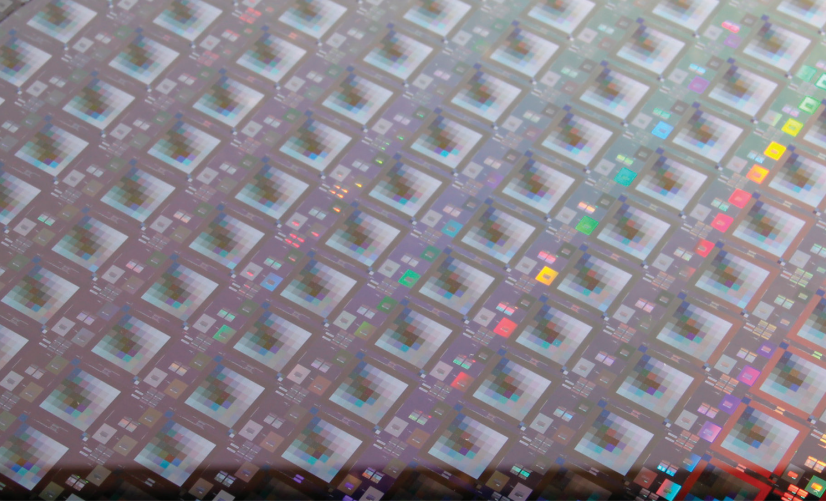
CHEMICAL-MECHANICAL PLANARIZATION (CMP)

THE CMP PROCESS

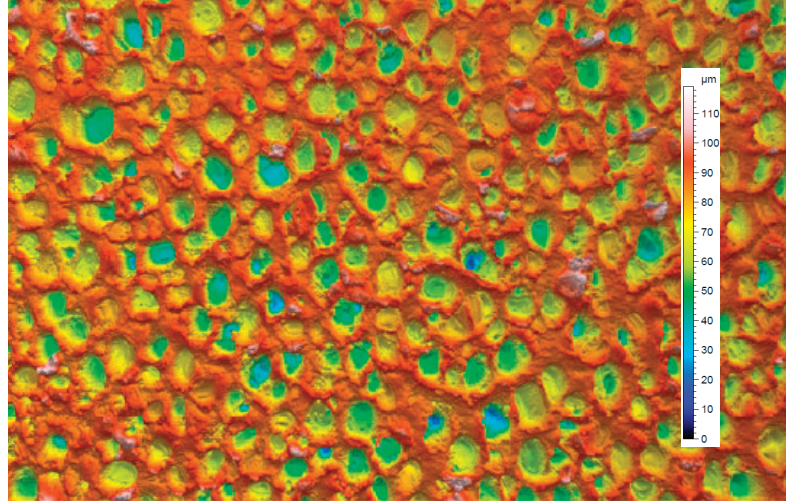
Highly integrated circuits, like logic and memory chips, consist of many material layers. In the course of manufacturing the surfaces have to be planarized over and over again to obtain sufficient process windows for critical processes like lithography and etching. Furthermore planarization ensures defined sizes of the structures, thus in the end reliable functioning of the electronic elements. Chemical-mechanical planarization (CMP) is the state of the art to reach the necessary planarity. The continuous shrinking in the semiconductor technology goes along with a higher demand for accuracy, as well as a higher number of materials used. Therefore it is necessary to understand the various CMP processes and to develop novel processes for newly introduced materials to be able to fulfill the demands of the coming technology nodes.

ADVANTAGES

- Industry matched 300 mm CMP-system for efficient portability into large-scale production
- Extensive experience in the field of consumable screening and characterization
- Long-standing experience in process characterization and development
- Close location and cooperation with semiconductor manufacturers and research institutions in Silicon Saxony
- Established qualification and contamination protocols for customer demos and loop of production wafers
- Test wafer availability
- Extensive metrology and analytics
- Electrical characterization and reliability tests
- Pre and post processing in house (barrier/liner/ seed deposition, copper ECD, anneal, etc.)
- ISO 9001 certified



▲ 300 mm CMP test wafer with pitch/density structures down to 28 nm node



▲ CMP pad pore structure obtained with confocal microscopy (0.7 x 0.5 mm)

INDUSTRY MATCHED EQUIPMENT (300MM)

- Applied Materials Reflexion LK polisher with Desica cleaner
- Flexible mobile slurry system (6 x 80 l)
 - 4 tanks for Platen distribution
 - 2 tanks for Cleaner feed
- Film thickness measurement tools
 - Ellipsometer (KLA Tencor Spectra CD/FX 100)
 - 4-Point-Prober (KLA Tencor RS-100)
- Surface topography measurements
 - Profiler (KLA Tencor HRP-340)
 - AFM (Veeco X3D-AFM)
 - Mobile confocal microscope (Nanofocus µsurf)
- X-Section and material analyses:
 - SEM, TEM, ToFSIMS, TXRF, XRR, XRD, etc.
- Defect control
 - Blanket: KLA Tencor SP2
 - Patterned wafer: NextIn AEGIS-I
 - Review: Applied Materials SEMVision G3
- Wafer availability
 - Unpatterned for removal rates and particle measurements: TEOS, ULK, Cu, Ta/TaN, Co, etc.
 - Patterned for defectivity and electrical data: 2x nm node CMP test chip
- Simulation capabilities
 - Modeling on different scales, esp. feature and chip scale
 - In-house developed simulation programs and routines
 - FEM based commercial software COMSOL Multiphysics
- Electrical characterization
 - TEL Precio probe station (-55-200 °C, fully automated)
 - SÜSS PA300 probe station (semi-automated, flexible)

APPLICATIONS

- CMP process development and optimization
- CMP design for manufacturing strategy development with semiconductor product manufacturers
- CMP consumables screening and characterization
 - Polishing pad
 - Conditioner
 - Slurry
 - Post CMP cleaning chemistry
 - Brush
 - Filter
 - and more
- CMP process characterization
 - Planarization
 - Defectivity
 - Removal rates, selectivity
 - Static etch rates
 - Electrical performance and reliability
- Modeling and simulation of the planarization behavior of patterned wafers
- CMP wafer processing on demand

Defect maps on patterned 300 mm wafers with exemplary review SEM pictures ►

